

MALE NATIONALS UNIFORM

Summary - details and sizes below

- Tracksuit Jacket - \$75
- Tracksuit Pants - \$75
- Auckland T-Shirt - \$35
- Leotard and shorts - already ordered

The Auckland T-shirt is the same as last years t-shirt, as such athletes who have one do not need to order a new one, but can do if they wish.

Leotard orders have already been submitted if you do not have a leotard and need one, please get in touch ASAP.

Athletes wear their normal Tri Star shorts for nationals.

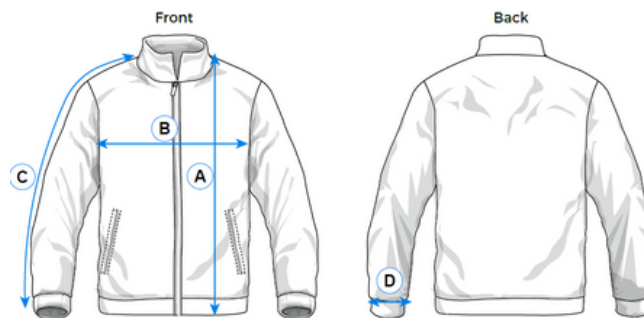
The Tracksuit is new for 2024 so all Nationals athletes will need to purchase these.

MALE NATIONALS UNIFORM

Tracksuit Jacket | Price \$75



Size Chart - Mens

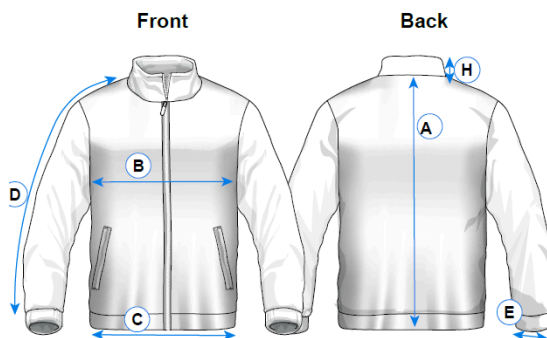


Measurements in cm

	4	6	8	10	12	14	S	M	L	XL	2XL	3XL	4XL
A. Length	50	53	55	58	61	64	67	70	73	76	79	82	85
B. 1/2 Chest	41	44	47	50	53	56	59	62	65	68	71	74	77
C. Sleeve length (neck to cuff)	57	60	62	65	68	71	74	77	81	84	87	90	93
D. 1/2 cuff (relaxed)	6	7	7	8	8	9	9	10	11	11.5	12	12.5	13

Tolerance +/- 2.0 cm

Size Chart - Youth



	4	6	8	10	12	14
A. Centre Back Length	51	53	54	58	61	65
B. 1/2 Chest	41.5	44	47.5	51	53	54
C. 1/2 Hem	40	43	46	49.5	51.5	53
D. Sleeve Length	58	60	62	65	68	71
E. Sleeve Opening	9.5	10	10.5	11	12	12

Measurements in cm

Tolerance +/- 1.0cm

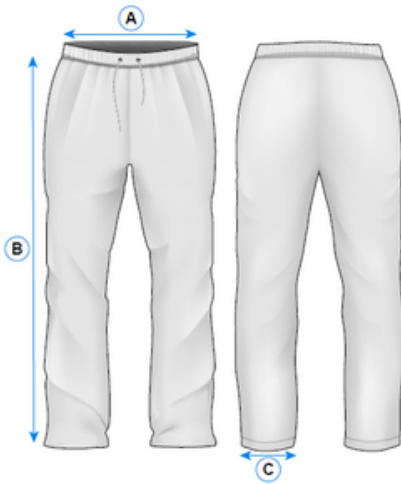
MALE NATIONALS UNIFORM

Tracksuit Pants | Price \$75



Note - the final design of the trackpants has a tapered leg with zips at the ankles

Size Chart - Mens



	XS	S	M	L	XL	2XL	3XL	4XL	5XL	6XL
A. 1/2 Waist	38	38	40	43	45	48	50	53	55	58
B. Outside leg (including W/B)	99	100	101	102	103	104	105	106	107	108
C. 1/2 Leg opening (Regular)	21	22	23	24	25	26	27	28	29	30
C. 1/2 Leg opening (Tapered)	16	17	18	19	20	21	22	23	24	25

Measurements in cm
Tolerance +/- 1.0cm

Size Chart - Youth



	4	6	8	10	12	14
A. 1/2 Waist	23	25.5	28	30.5	33	35.5
B. Outside leg (including W/B)	70	75	80	85	90	95
C. 1/2 Leg opening (Regular)	13	14	15	17	18	20
C. 1/2 Leg opening (Tapered)	10	11	12	13	14	15

Measurements in cm
Tolerance +/- 2cm

MALE NATIONALS UNIFORM

Tshirt| Price \$35



Size Chart

T301MS MENS MODERN FIT	S	M	L	XL	2XL	3XL	5XL			
GARMENT ½ CHEST (CM)	52	55	58	62	65	71	79			
T301LS WOMENS MODERN FIT	6	8	10	12	14	16	18	20	22	24
GARMENT ½ CHEST (CM)	44	46.5	49	51.5	54	56.5	59	62	65	68
T301KS KIDS MODERN FIT	4	6	8	10	12	14	16			
GARMENT ½ CHEST (CM)	36	38	40	42	44	46	49			

ALL MEASUREMENTS ARE APPROXIMATE AND ARE FOR REFERENCE ONLY. COLOURS ARE REPRODUCED AS CLOSELY AS PRINTING ALLOWS.

MALE NATIONALS UNIFORM

Leotard



**MAG Leotards have already been ordered
If you have not ordered a leotard please get in
touch with your coach ASAP!**

Shorts

MAG Level 4-6 White Shorts

MAG Level 7+ Navy Shorts