

# **FEMALE NATIONALS UNIFORM**

**Summary - details and sizes below**

- Tracksuit Jacket - \$75
- Tracksuit Pants - \$75
- Auckland T-Shirt - \$35
- WAG Leotard - \$ 290

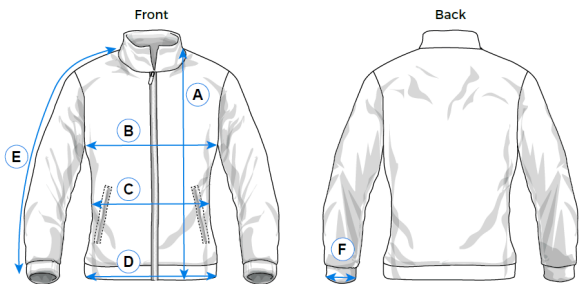
**All Auckland Uniform is the same as last  
years.**

# FEMALE NATIONALS UNIFORM

Tracksuit Jacket | Price \$75



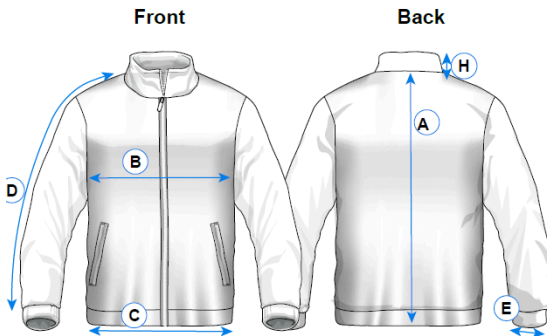
## Size Chart - Womens



	Measurements in cm										
	12/3XS	XXS	XS	S	M	L	XL	2XL	3XL	4XL	5XL
A. Front length (top of shoulder)	56	59	62	65	68	71	74	77	80	83	86
B. 1/2 Chest	43	45.5	48	50.5	54.5	58.5	62.5	66.5	70.5	74.5	78.5
C. 1/2 Waist	39.5	42	44.5	47	50	54	58	62	66	70	74
D. 1/2 Hem	41.5	44	46.5	49	52.5	56	60	64	68	72	76
E. Sleeve length (neck to cuff)	65	68	71	73	75	77	79	82	85	88	91
F. 1/2 Cuff	9	9.5	10	10.5	11	11.5	12	12.5	13	13.5	14

Tolerance +/- 1.5 cm

## Size Chart - Youth



	4	6	8	10	12	14
A. Centre Back Length	51	53	54	58	61	65
B. 1/2 Chest	41.5	44	47.5	51	53	54
C. 1/2 Hem	40	43	46	49.5	51.5	53
D. Sleeve Length	58	60	62	65	68	71
E. Sleeve Opening	9.5	10	10.5	11	12	12

Measurements in cm

Tolerance +/- 1.0cm

# FEMALE NATIONALS UNIFORM

Tracksuit Pants | Price \$75



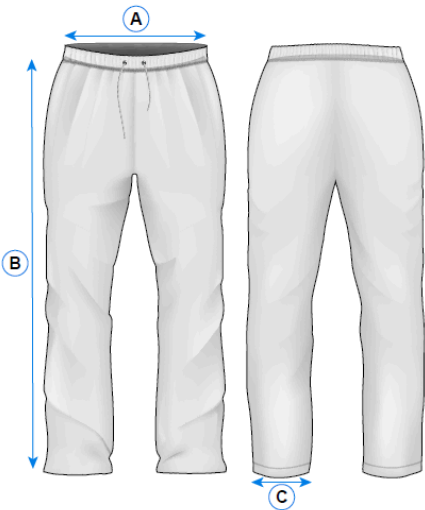
Note - the final design of the trackpants has a tapered leg with zips at the ankles

## Size Chart - Womens



	XXS	XS	S	M	L	XL	2XL	3XL	4XL	5XL	6XL
To fit waist circumference	70	75	80	84	89	94	99	103	107	111	115
A. 1/2 waist relaxed	32	34	36	38	40	42	44	46	48	50	52
B. 1/2 hips (20cm below waist)	46	48	50	52	54	56	58	60	62	64	66
C. Front rise (not including W/B)	22.5	23.5	24.5	25.5	26.5	27.5	28.5	29.5	30.5	31.5	32.5
D. Back rise (not including W/B)	32	33	34	35	36	37	38	39	40	41	42
E. Outside leg (including W/B)	96	98	100	102	104	106	108	110	112	114	116
F. 1/2 Leg opening	12.5	13	13.5	14	14.5	14.5	15	15	15.5	15.5	16

## Size Chart - Youth



	4	6	8	10	12	14
A. 1/2 Waist	23	25.5	28	30.5	33	35.5
B. Outside leg (including W/B)	70	75	80	85	90	95
C. 1/2 Leg opening (Regular)	13	14	15	17	18	20
C. 1/2 Leg opening (Tapered)	10	11	12	13	14	15

Measurements in cm  
Tolerance +/- 2cm

# FEMALE NATIONALS UNIFORM

Tshirt | Price \$35



## Size Chart

T301MS MENS MODERN FIT	S	M	L	XL	2XL	3XL	5XL			
GARMENT ½ CHEST (CM)	52	55	58	62	65	71	79			
T301LS WOMENS MODERN FIT	6	8	10	12	14	16	18	20	22	24
GARMENT ½ CHEST (CM)	44	46.5	49	51.5	54	56.5	59	62	65	68
T301KS KIDS MODERN FIT	4	6	8	10	12	14	16			
GARMENT ½ CHEST (CM)	36	38	40	42	44	46	49			

ALL MEASUREMENTS ARE APPROXIMATE AND ARE FOR REFERENCE ONLY. COLOURS ARE REPRODUCED AS CLOSELY AS PRINTING ALLOWS.

# FEMALE NATIONALS UNIFORM

Leotard | Price \$290



## LEOTARD SIZING

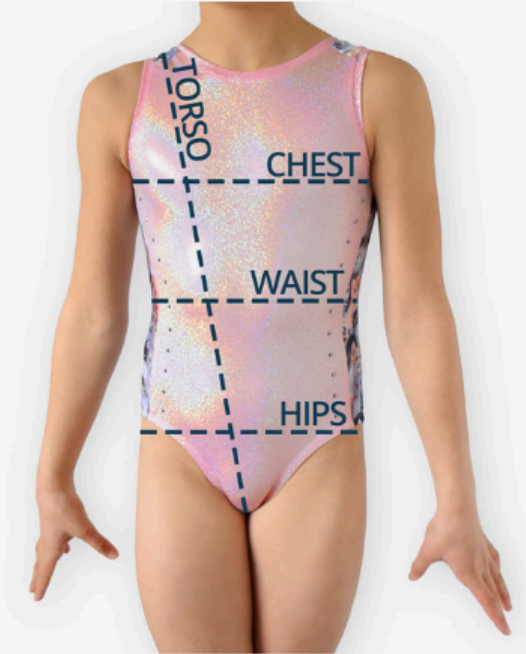
Measure the **chest** at the widest part of the ribcage (usually just under the armpits), the **waist** at the smallest part between the ribcage and hips, and the **hips** at the widest part around the hips/bum area. The **torso** is measured by holding one end of a tape measure to one shoulder, and looping the tape measure down the chest through the crotch and up the back to meet at the same shoulder.

Always measure either over a leotard, or the underwear that will be worn under a leotard.

Tick Tock Designs leotards are designed to fit like a second skin. For a competition leotard, order the size that best matches your measurements. For training leotards, and/or if you need growing room, please size up.

CHILD SIZES	CHEST	WAIST	HIPS	TORSO	LONG TORSO*
Child 4	59cm	52cm	60cm	99cm	107cm
Child 6	64cm	55cm	65cm	107cm	115cm
Child 8	69cm	58cm	70cm	115cm	123cm
Child 10	74cm	61cm	75cm	123cm	131cm
Child 12	79cm	64cm	80cm	131cm	139cm

ADULT SIZES	CHEST	WAIST	HIPS	TORSO	LONG TORSO*
Adult 6	84cm	67cm	85cm	139cm	147cm
Adult 8	89cm	70cm	90cm	147cm	155cm
Adult 10	94cm	73cm	95cm	155cm	163cm
Adult 12	99cm	76cm	100cm	163cm	171cm



\* Selected leotards are available in long torso.